

Blackheath/Charlton Commercial Burglary Strategy

**Royal Borough Of Greenwich
Daniel Bygrave – Safer Spaces
Team**

Aims & Objectives

- To apply a multi agency approach to this locality whereby the local authority, Metropolitan Police and local business owners and work together.
- To Support Business Owners in reducing Burglary and ASB on their premises and the high street overall

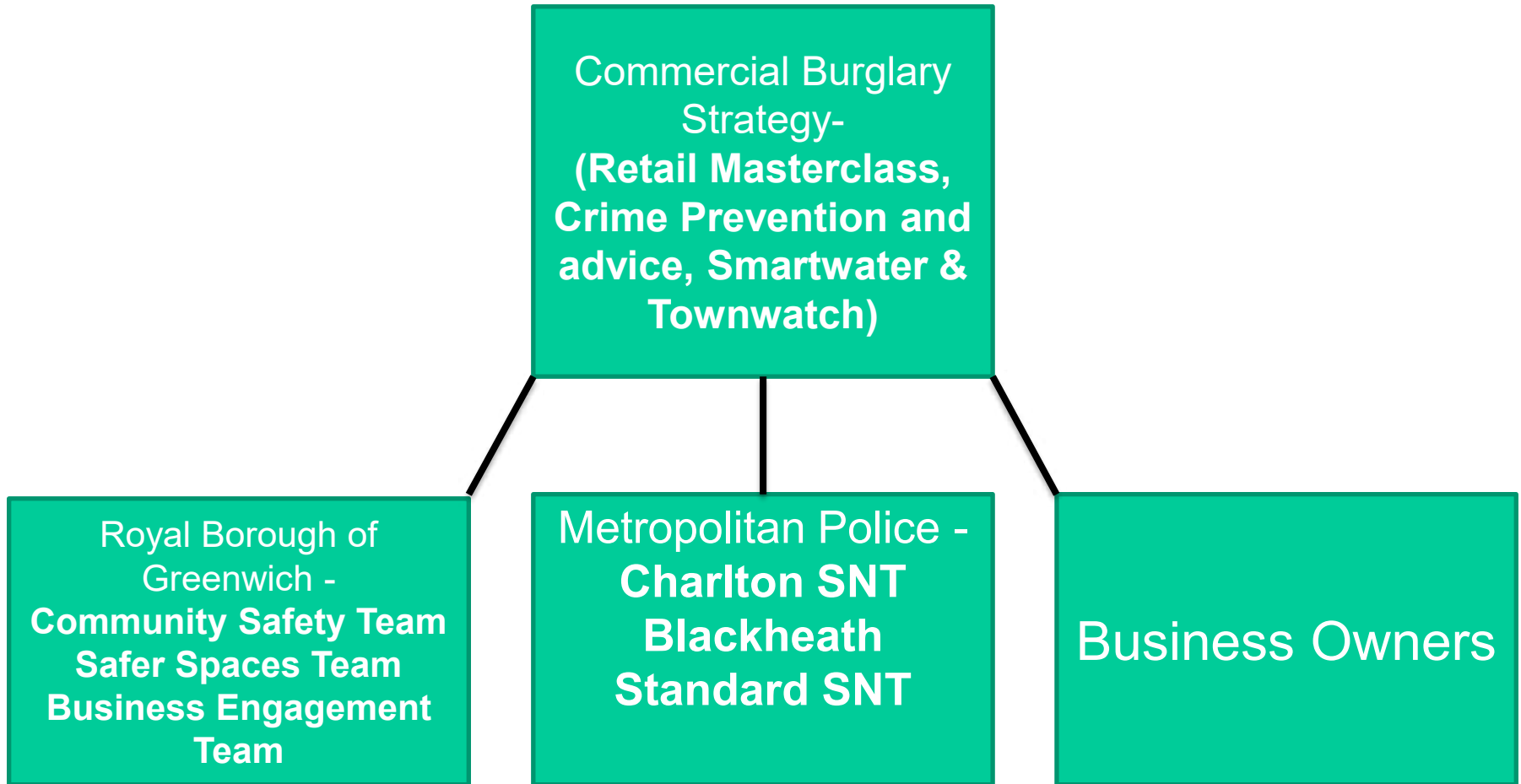
Actions To Date

- Increase Patrols by Council Officers (Community Enforcement Officers, Envirocrime Officers, Tenancy Enforcement Officers)
- Police Surgery Drop Ins
- Overt/Covert Patrols by the Safer Neighbourhood Team
- Contact with Local Business Officers regarding on-going ASB & Burglary issues

Plans For The Future

- Smartwater to be rolled out across the Wards
- Retail Master class for the shop owners
- Townwatch to be rolled out to Business Owners to share information
- Crime prevention advice and information for Business owners
- Council Directory for reporting information

Commercial Burglary Strategy



TOWNWATCH

- Share Information

You can share any relevant information on Townwatch with other users, like Royal Greenwich or the Safer Neighbourhood Police team, so you can get to know your neighbours better and keep up to date!

- Incident Reporting

You can report any community safety incidents on the app, no incident is too big or small, and this information could be the missing link to identify and prosecute criminals. This is particularly useful for the Safer Neighbourhood Police team.

- Townwatch Messenger

You can send messages to other members, to your local Safer Neighbourhood Police team or the Safer Spaces team, directly within the app. You can also use the messenger to live chat and get help if you're having any technical issues.

TOWNWATCH

- Townwatch Ban

Townwatch can operate a 'ban from one, ban from all' policy for persistent offenders in our town centres. You can propose a ban after an incident and members will decide whether to action. There's a photo gallery of people who been banned and you can record when a ban has been breached.

- Townwide Alerts

You can alert other users to community safety issues by sending a notification and an email will go out to all members. You could use this feature if you've spotted a known shoplifter in the area.

How To Join Townwatch

Sign up to Townwatch to help make your town centre safer and more welcoming.

Membership is £35.99 per year, which is just 10p a day! You'll get access to the mobile app and desktop version and there's a guided tutorial to teach you how to use Townwatch.

Register your interest by emailing the Safer Spaces team at Safer-Spaces-Team@royalgreenwich.gov.uk or **call 020 8921 8258**.

Crime Prevention Information & Advice

- Ensure Your properties are securely locked
- Do not keep large floats in your tills over night
- Report incidents to the police on 101 in non emergencies or 999 in cases of emergency
- Continue to report incidents to relevant departments within the council
- Continue to communicate with one another

Any Questions?

Safer-Spaces-Team@royalgreenwich.gov.uk