

## Key Messages

### Crime Statistics

- For the rolling 12 months from October 2017 to September 2017, Greenwich showed an increase in total crime of 0.2% when compared to the previous 12 months. This compared to the Metropolitan Police Service which showed a 2.8% increase. The increase in Greenwich was mainly driven by increases in Violence Against the Person (particularly Domestic Offences) and Burglary and to a lesser extent by Theft From and Theft Of a Motor Vehicle.

### Knife Crime

- The number of young victims of knife crime (up to age 24, excluding domestic abuse) reduced in quarter 2.
- Total Knife Crime With Injury (all ages of victims) also reduced (38 offences, down from 54 in quarter 1).
- Violence With Injury (not knife-specific) remained almost identical in quarters 1 and 2 (486 and 489 offences).
- Weapon-Enabled offences reduced in quarter 2 (123 offences, down from 163 – these include offences of threatening with or intimidating).

### Houses in Multiple Occupation (HMO's)

- Up to the end of the quarter, a total of 469 HMOs had been licensed and compliance visits to these HMOs commenced. Enforcement against landlords who fail to licence their property resulted in one Civil Penalty being issued (possible penalties up to £30,000) with another 73 in progress.
- Planning Article 4 was implemented on 27th September 2018. This will bring stronger controls on residential properties being converted to HMOs.

### Problem solving in Plumstead and Woolwich

- Key problem solving activity was undertaken around Marine Drive and General Gordon Square in Woolwich and at the Pettman Crescent Underpass in Plumstead

## External Updates

### Basic Command Unit (BCU)

- Throughout quarter 2 the police have continued to put in place the arrangements of the new Basic Command Unit that will cover Greenwich, Lewisham and Bexley. The 'go-live' date has now been confirmed as 28th November 2018. This will be a considerable change for Greenwich as we move towards sharing police resources across three boroughs, working with a new command structure configurations and an overall reduction in police numbers.

### Mandatory HMO Licensing

- RBG has continued to prepare for the extension of Mandatory HMO Licensing. This will be implemented on 1st October 2018.

## Fire Doors and guidance on windows

- We are working closely with the MHCLG and London Councils to keep abreast of the changes in testing standards for fire rated door products, whilst working to ensure we are keeping our residents safe
- Following advice from the MHCLG as part of the evolving fire safety agenda post Grenfell, we are inspecting window panels on our blocks and estates to ensure they offer the required safety standard of fire protection, to make sure we keep our residents safe. The inspection programme will be completed in February 2019.

## Hackitt Report and Fire Safety

- Following on from recommendations from the Hackitt review published in May 2018, RBG are drafting an action plan which will include:
  - Clear identification of a duty holder with responsibility for building safety for blocks over 10 floors
  - A mandatory incident reporting mechanism
  - Re-asserting roles of residents and implementing clear and regular communication.

## Service Updates

### Knife Crime Task Group

- In response to the recent rise in knife crime injury and fatalities across London, the borough established the Knife Crime and Serious Youth Violence Task Group in June 2018. The group's remit is to bring down knife crime and violence (especially among young people) in the borough. The group continued to meet throughout quarter 2, initially on a weekly basis and then after seven weeks on a fortnightly basis. It is chaired by the Leader and the Cabinet Member for Community Safety and Integrated Enforcement and has a membership including other Cabinet Members, Directors and a police Superintendent from the three-borough South-East cluster.
- The Task Group has identified a broad range of work and its first steps included mapping the current service delivery model, commissioning a detailed problem profile and preparing for a programme of engagement with young people. During quarter 2 the Task Group has focused on 4 key areas:
  - Understanding the problem through better data and analysis
  - Engaging the community to identify and help resolve the problem. This includes, young people, parents and faith communities.
  - Early identification – Identifying those children and families most at risk of gang involvement and providing them with early help
  - Interventions - Looking at interventions elsewhere, including Integrated Gang Units.

### Problem Solving Activity

- In quarter 2 problem solving activity was undertaken in Marine Drive, Woolwich in response to large groups of young people involved in ASB and violent behaviour. Following joint operations with key partners a significant reduction in crime was witnessed by local people.
- Problem solving was also undertaken in relation to a group of adults who were being threatening and violent around the Equitable Building in General Gordon Square in Woolwich. The individuals were dealt with and no further problems have been reported. Engagement with a prominent retailer has also helped him to feel safer in his business premises.
- On-going problem solving work to improve the physical condition and overall safety and perception of the Pettman Crescent Underpass in Plumstead had almost been concluded by quarter 2. The public

space has undergone considerable improvement at very little cost. The final phase will be delivered in quarter 3 and will involve further improvements by way of an art work installation.

### Road Safety

- The Royal Borough launched the first three schools in its innovative 'School Streets' trial on 30th October (at De Lucy, Gordon and Haimo schools. The final trial site, at St Joseph's School, is due to launch this month (planned for 28th November). The School Streets have created brilliant – safe and clean – spaces for children arriving and leaving school, to encourage walking and cycling.
- The Council's School Travel Planning work with three schools has been nominated for excellence awards at London-wide and national awards in December.

### Estates

- Woolwich Estates – Additional policing patrols on the new Trinity Walk estate, as well as at Morris Walk and Maryon Grove, paid for from the Woolwich Estates programme, continue. Monitoring of the outcomes of this additional work is being conducted.
- Work with Registered Providers (RP) – A series of one to one meetings have been arranged to work with RPs on their development programmes in the Borough to assist with unpicking any blockages and issues they might have to increase supply and speed up delivery.
- Woolwich Estates – The RP partner for the Woolwich Estates development, Paragon Asra, have employed staff to be based in Woolwich. These staff liaise and work with their tenants and have been promoting training for tenants to improve their employability.
- Fire Safety (Private Blocks)-Across 7 ACM developments there are currently 2 which have remediation plans in place. The building owners of a further 2 developments have reported an intent to remediate and are developing plans. The Council is continuing to press the remaining building owners on their plans for remediation, 2 of which are partially clad.

Subject Area	Indicator	Value	Previous Value	Target
Safer Borough	Total number of Notifiable Offences	6,564 (Q2 18/19)	6,540 (Q1 18/19)	
	Residential Burglary Offences	427 (Q2 18/19)	329 (Q1 18/19)	
	Personal Robbery Offences	153 (Q2 18/19)	241 (Q1 18/19)	
	Domestic Abuse Offences	1050 (Q2 18/19)	989 (Q1 18/19)	
	No of repeat victims of Domestic Abuse (MARAC)	19.80% (Q2 18/19)	15.90% (Q1 18/19)	
	Non-Domestic Abuse Violence With Injury Offences	489 (Q2 18/19)	486 (Q1 18/19)	
	Weapon Enabled Offences	123 (Q2 18/19)	163 (Q1 18/19)	
	Knife Crime with injury offences	38 (Q2 18/19)	54 (Q1 18/19)	
	Knife Crime With Injury Offences that are non-domestic and where the Victim is aged 1-25	11 (Q2 18/19)	26 (Q1 18/19)	
Hate Crime	No of Hate Crime offences	301 (Q2 18/19)	148 (Q1 18/19)	
	No of Repeat Victims of Hate Crime (received at hate crime case panel)	6.70% (Q2 18/19)	0% (Q1 8/19)	
	No of Prevent referrals	15 (Q2 18/19)	14 (Q1 18/19)	
FPNs & Anti-Social Behaviour	No of Fixed Penalty Notices issues	309 (Q2 18/19)	420 (Q1 18/19)	
	No of ASB incidents reported to the police	1,807 (Q2 18/19)	1,729 (Q1 18/19)	
	Number of new ASB cases opened by the ASB Team	95 (Q2 18/19)	89 (Q1 18/19)	
Road Safety	Number of road accidents leading to death or serious injury - Children	4 (0 fatal) (2017)		
	Number of road accidents leading to death or serious injury - All	97 (3 fatal) (2017)		
	% of residential streets that are 20mph zone controlled	85% (2018)	80% (2017)	100% (2023)
	Street Light Faults - % of total assets	1.4% (Sep 2018)	1.2% (Jun 2018)	<2%
	Street light repairs (days) – average time taken to repair faulty street lights	2.5 days (Sep 2018)	2.2 days (Jun 2018)	5 days
% of highway safety defects repaired in time	96%	96% (2017/18 YE)	95%	
Safer Homes	No. of completion certs issued by local authority	611 (2018/19 YTD)		
	No. of illegal building work discovery cases in the borough	191 (since 2015)		
	Number of enforcement notices served across all private rented sector Environmental Health teams	120 (Q2 ytd 18/19)	64 (Q1 18/19)	
	No of licensed HMOs	469 (Q2 ytd 18/19)	252 (Q1 18/19)	2000

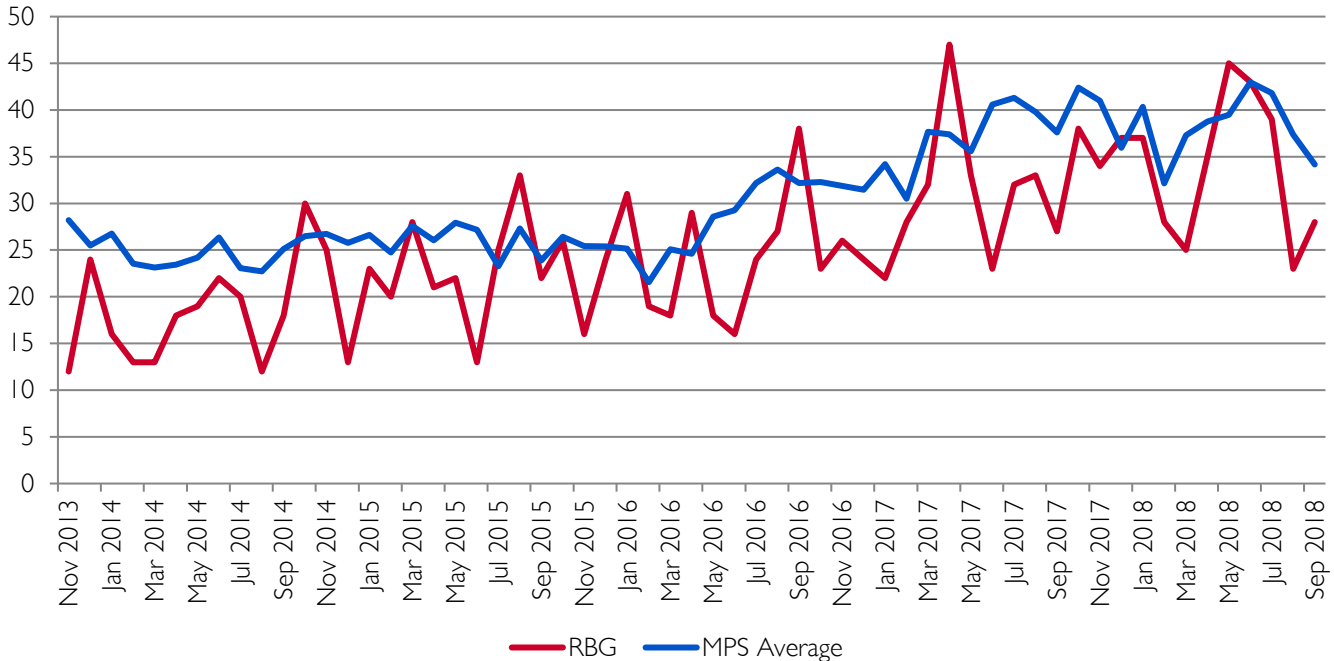
## Appendix B

## Analysis

### Knife Crime

- Levels of Knife Crime Offences in Royal Greenwich have generally been below the MPS Average since November 2013. The trend for both London and Royal Greenwich has been steadily increasing over this time. There were recent peaks in April 2017 and May 2018.
- The chart below shows the long term trend in knife crimes offences from 2013 to 2018

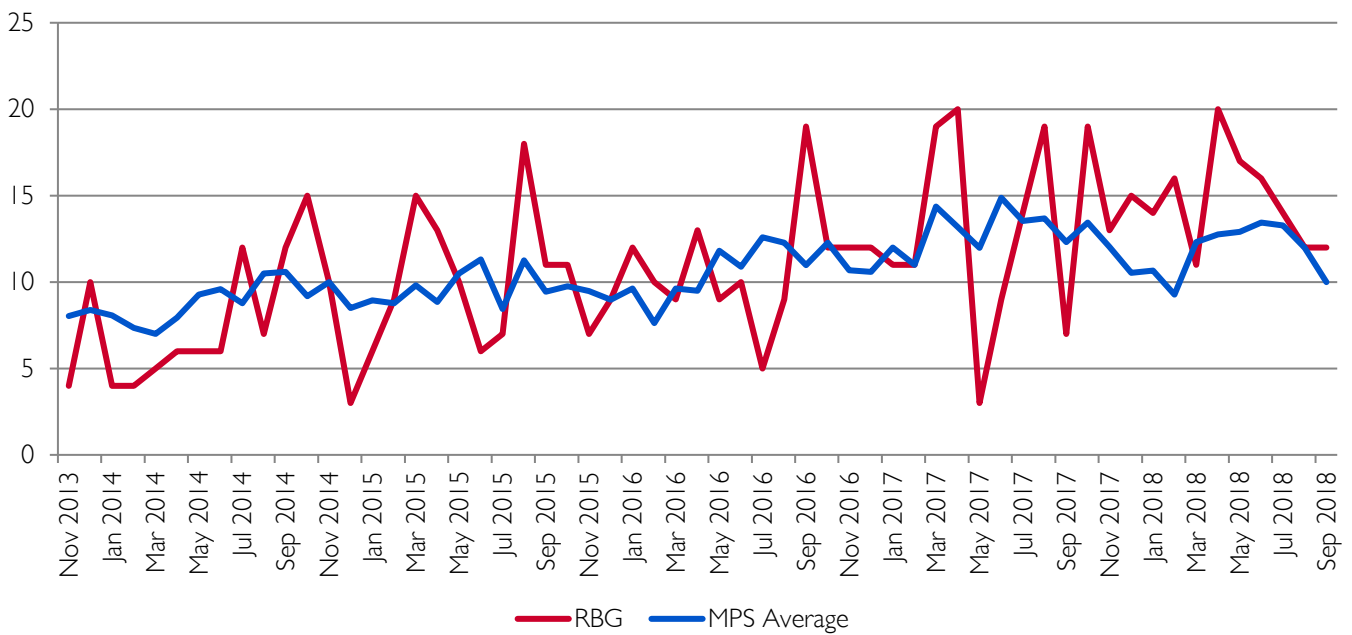
Knife Crime Offences - Long Term Trend



- Knife Crime is classified as an offence of homicide, attempted murder, assault with intent to cause harm, assault with injury, threats to kill, sexual offences (including rape) and robbery where a knife or sharp instrument has been used to injure, used as a threat, or the victim was convinced a knife was present during the offence. This includes offences that are domestic.
- Knife Crime with Injury has the same definition as Knife Crime Offences but someone has been injured as a result. This includes offences that are domestic.
- The number of offences per month is quite small, making the trend quite volatile. There has however been a slight increase in offences in Royal Greenwich and London since 2013. There were recent peaks August 2017, October 2017 and April 2018.

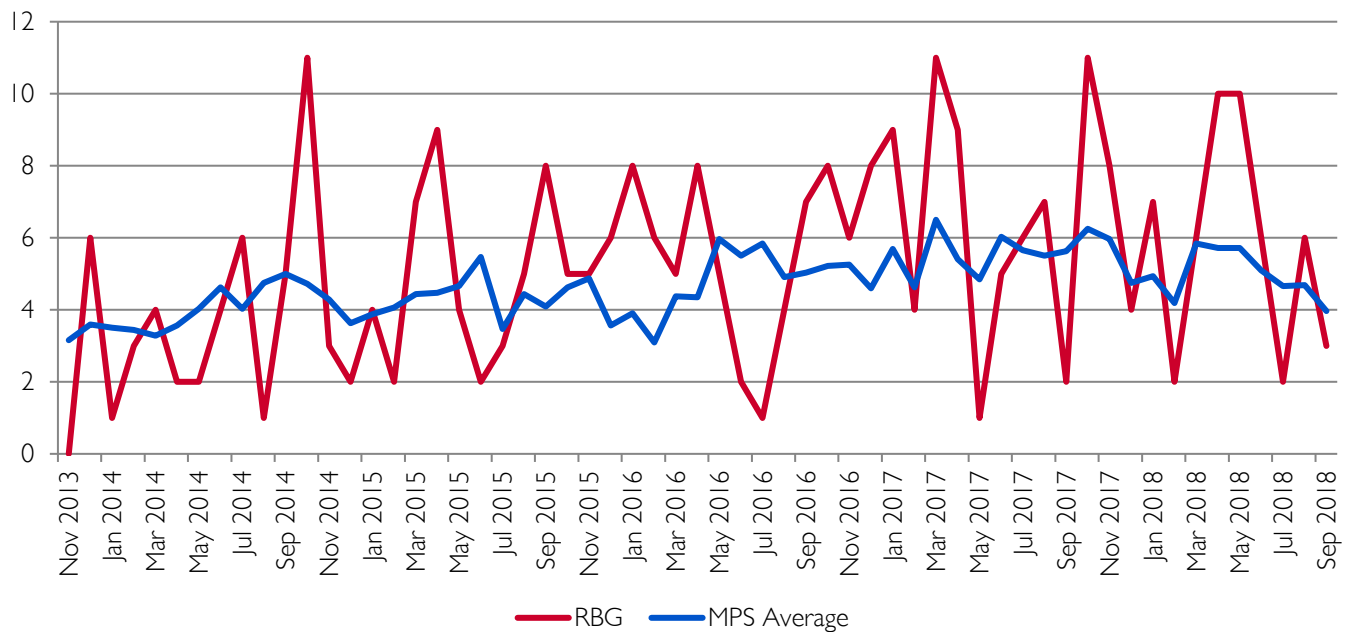
- The chart below shows the long term trend for knife crime with injury from 2013 to 2018

Knife Crime With Injury Offences - Long Term Trend



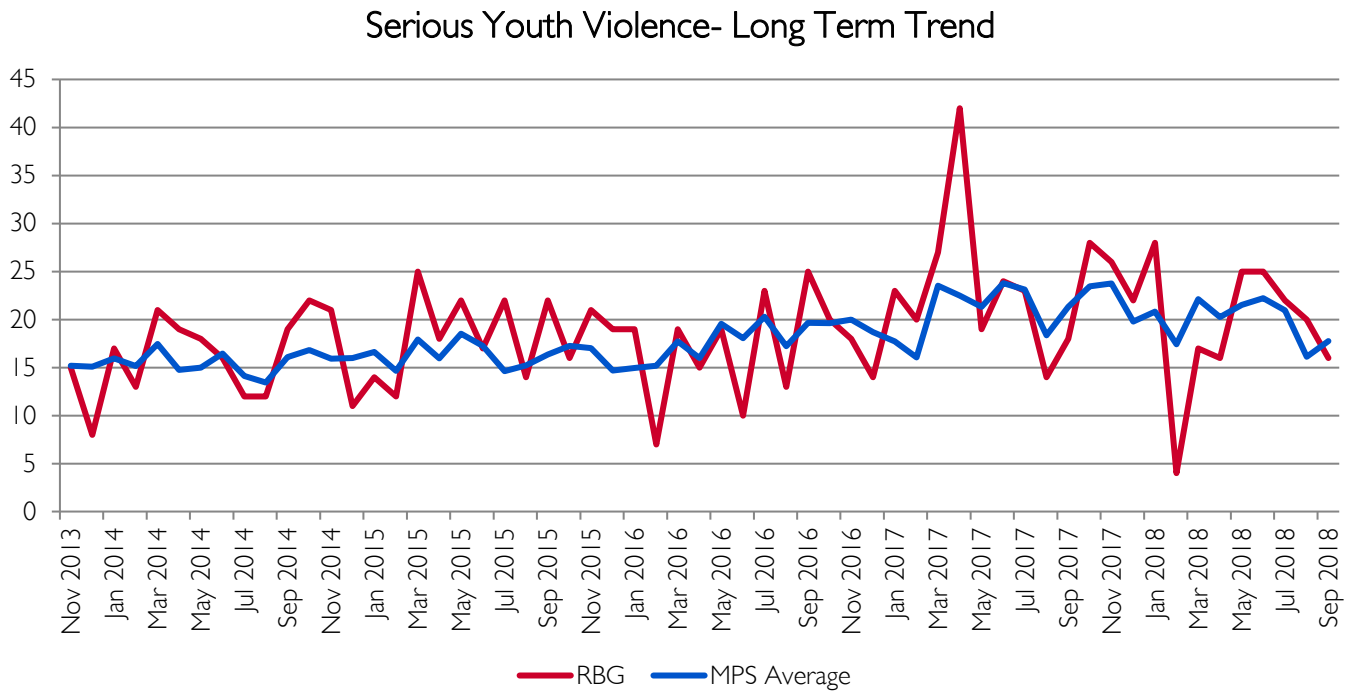
- The chart below shows the long term trend for knife crime with injury (victims aged 1-24) from 2013 to 2018

Knife Crime With Injury Victims Aged 1-24 Offences - Long Term Trend



- This offence has the same definition as Knife Crime Offences but a victim aged 1-24 has been injured as a result and it was not flagged as Domestic.
- The number of offences per month is quite small, making the trend quite volatile. There has however been a slight increase in offences in Royal Greenwich and London since 2013. Levels of offences in Royal Greenwich have also generally been slightly above the MPS Average. There were recent peaks October 2017 and April/May 2018.

- The chart below shows the long term trend in Serious Youth Violence from 2013 to 2018



- Serious Youth Violence (SYV) is defined as any offence of Most Serious Violence (including murder, wounding or endangering life and death by dangerous driving), Gun Crime or Knife Crime, where the victim is aged 1-19.
- The number of offences per month is quite small, making the trend quite volatile. Levels of offences in Royal Greenwich have also generally been slightly above the MPS Average since 2013.