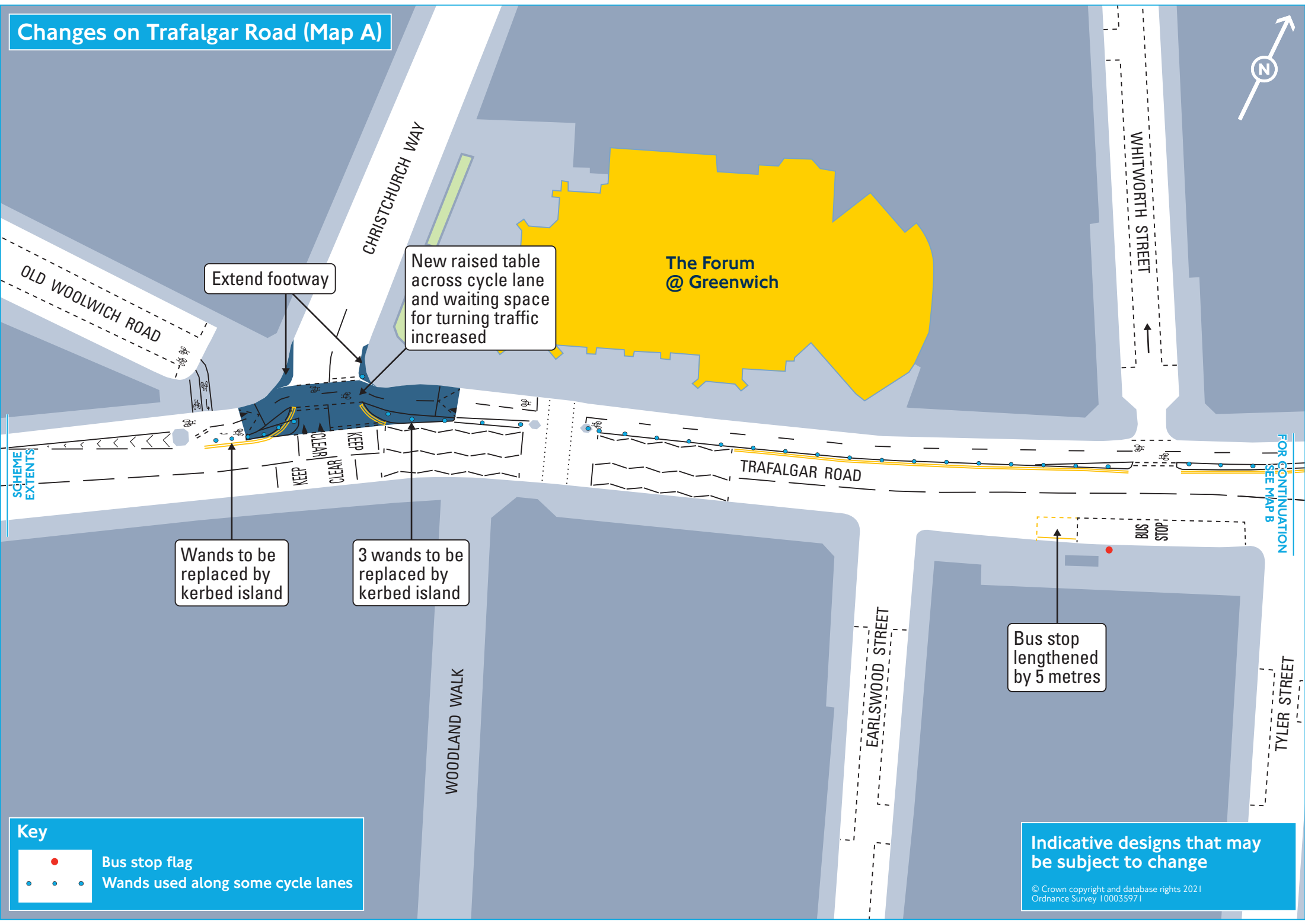


Changes on Trafalgar Road (Map A)



Extend footway

New raised table across cycle lane and waiting space for turning traffic increased

Wands to be replaced by kerbed island

3 wands to be replaced by kerbed island

Bus stop lengthened by 5 metres

Key

- Bus stop flag
- ● ● Wands used along some cycle lanes

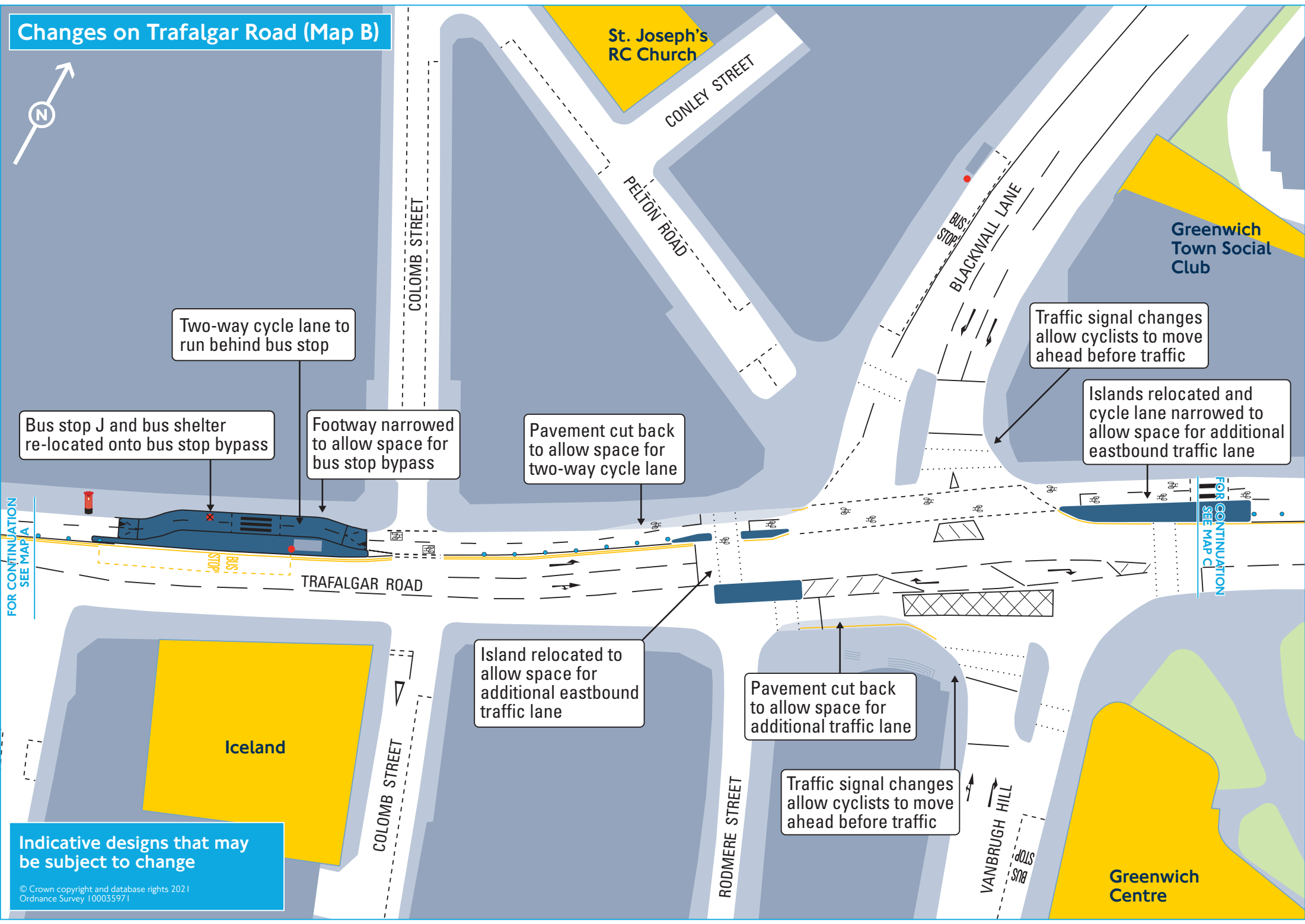
Indicative designs that may be subject to change

© Crown copyright and database rights 2021
Ordnance Survey 100035971

SCHEME EXTENTS

FOR CONTINUATION SEE MAP B

Changes on Trafalgar Road (Map B)



Bus stop J and bus shelter re-located onto bus stop bypass

Two-way cycle lane to run behind bus stop

Footway narrowed to allow space for bus stop bypass

Pavement cut back to allow space for two-way cycle lane

Traffic signal changes allow cyclists to move ahead before traffic

Islands relocated and cycle lane narrowed to allow space for additional eastbound traffic lane

Island relocated to allow space for additional eastbound traffic lane

Pavement cut back to allow space for additional traffic lane

Traffic signal changes allow cyclists to move ahead before traffic

FOR CONTINUATION SEE MAP A

FOR CONTINUATION SEE MAP C

Indicative designs that may be subject to change

Changes on Woolwich Road (Map C)



Greenwich Town Social Club

HATCLIFFE STREET

COMMERELL PLACE

ARMITAGE ROAD

New cycle parking stands

New parking bay operational: Mon to Sat, 7am - 7pm, 20 mins, No return within 1 hour

New raised table across cycle lane and waiting space for turning traffic increased

FOR CONTINUATION SEE MAP B

FOR CONTINUATION SEE MAP D

WOOLWICH ROAD

BUS STOP

BUS STOP

Islands relocated and two-way cycle lane narrowed to provide space for additional eastbound lane at junction

HAZEL LANE

Indicative designs that may be subject to change

Greenwich Centre

Changes on Woolwich Road (Map D)



Two-way cycle lane reduced in width to provide more space for traffic to pass stationary buses

Springwell Daycare Nursery

FOR CONTINUATION SEE MAP C

FOR CONTINUATION SEE MAP E

WOOLWICH ROAD

BUS STOP

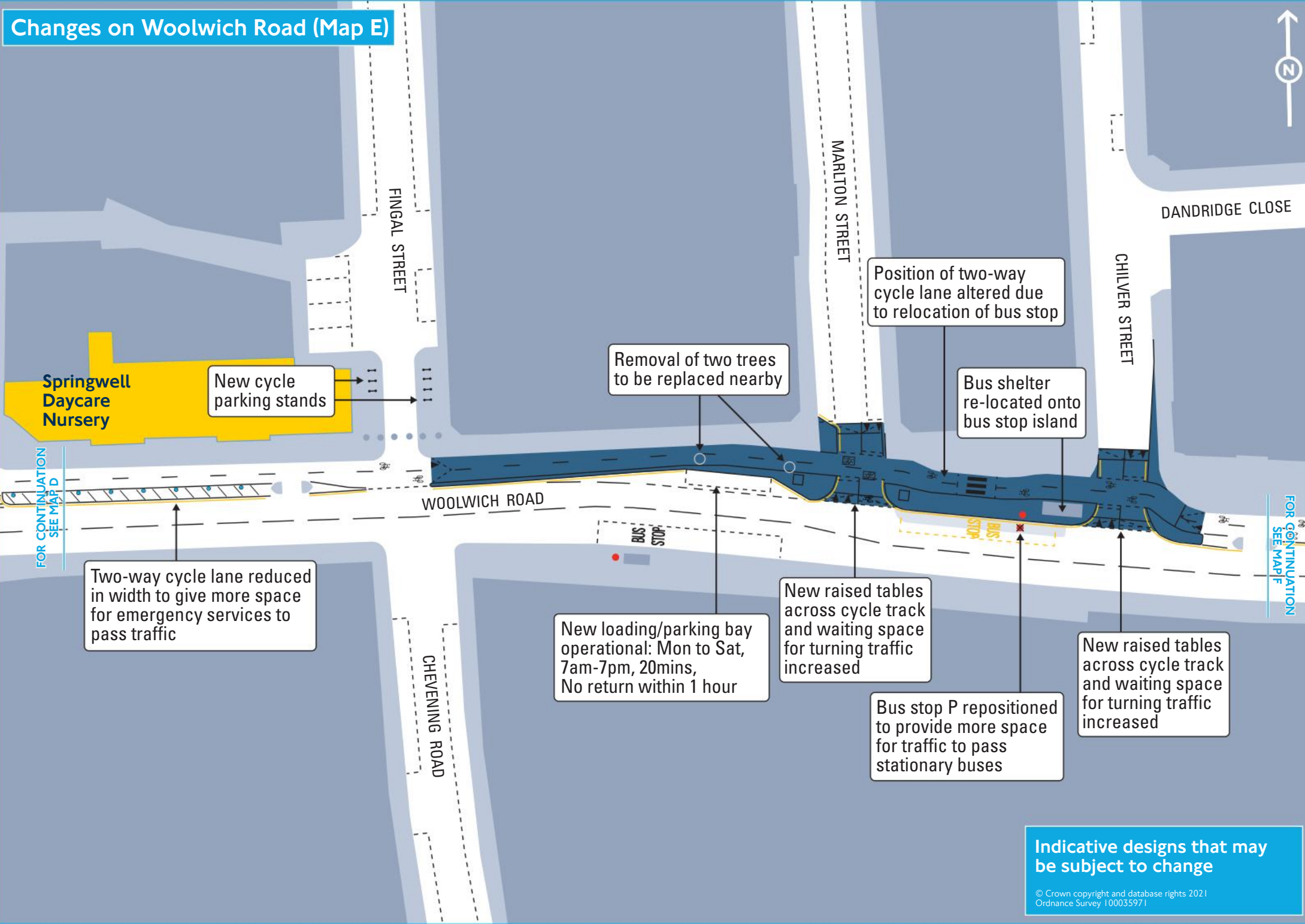
CALVERT ROAD

ANNANDALE ROAD

DENFORD STREET

Indicative designs that may be subject to change

Changes on Woolwich Road (Map E)



Springwell Daycare Nursery

New cycle parking stands

Removal of two trees to be replaced nearby

Position of two-way cycle lane altered due to relocation of bus stop

Bus shelter re-located onto bus stop island

Two-way cycle lane reduced in width to give more space for emergency services to pass traffic

New loading/parking bay operational: Mon to Sat, 7am-7pm, 20mins, No return within 1 hour

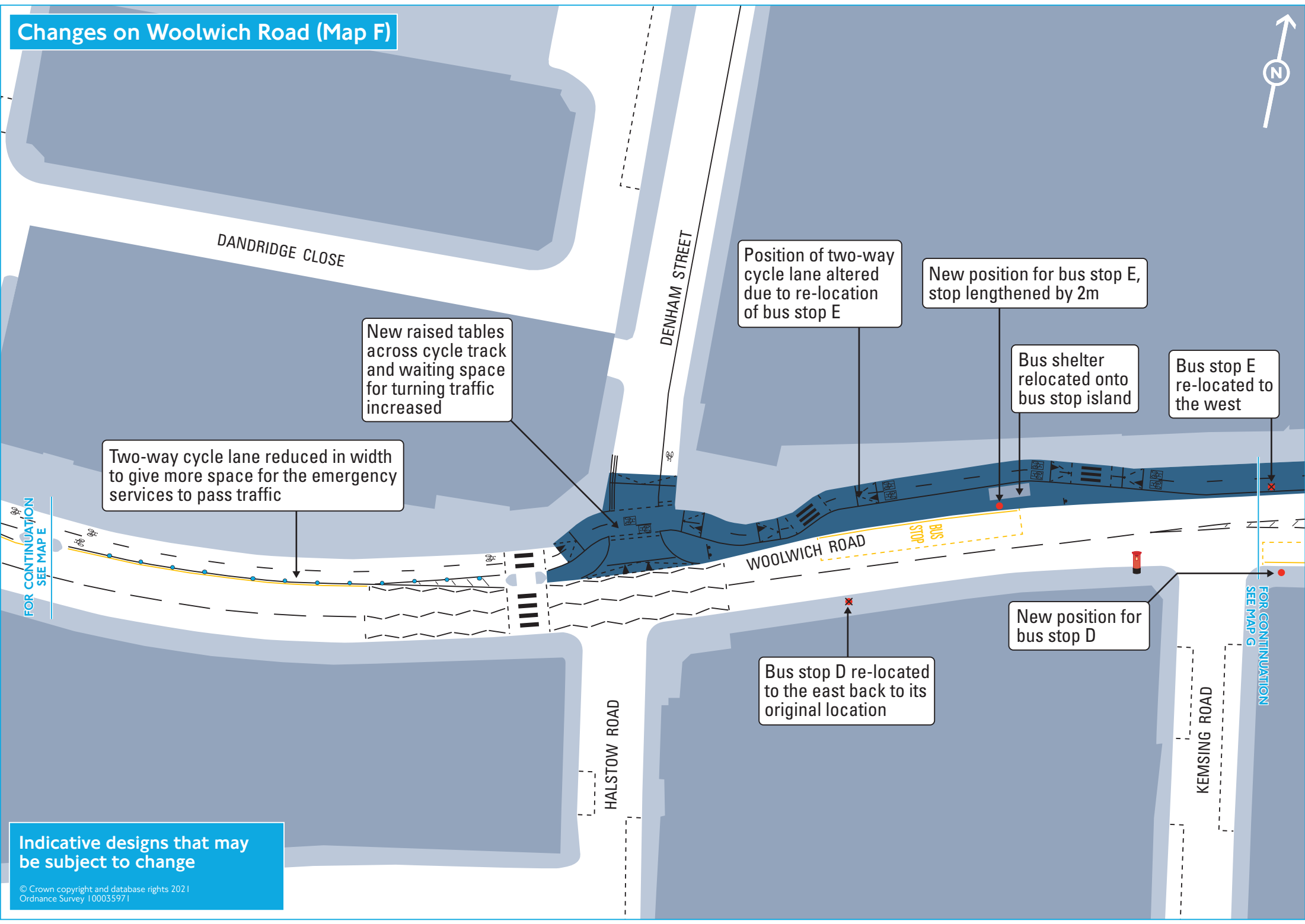
New raised tables across cycle track and waiting space for turning traffic increased

Bus stop P repositioned to provide more space for traffic to pass stationary buses

New raised tables across cycle track and waiting space for turning traffic increased

Indicative designs that may be subject to change
© Crown copyright and database rights 2021
Ordnance Survey 100035971

Changes on Woolwich Road (Map F)



Two-way cycle lane reduced in width to give more space for the emergency services to pass traffic

New raised tables across cycle track and waiting space for turning traffic increased

Position of two-way cycle lane altered due to re-location of bus stop E

New position for bus stop E, stop lengthened by 2m

Bus shelter relocated onto bus stop island

Bus stop E re-located to the west

New position for bus stop D

Bus stop D re-located to the east back to its original location

Indicative designs that may be subject to change

© Crown copyright and database rights 2021
Ordnance Survey 100035971

Changes on Woolwich Road (Map G)



Position of two-way cycle lane altered due to re-location of bus stop E

Lamp post re-located to allow space for two-way cycle lane

FOR CONTINUATION
SEE MAP F

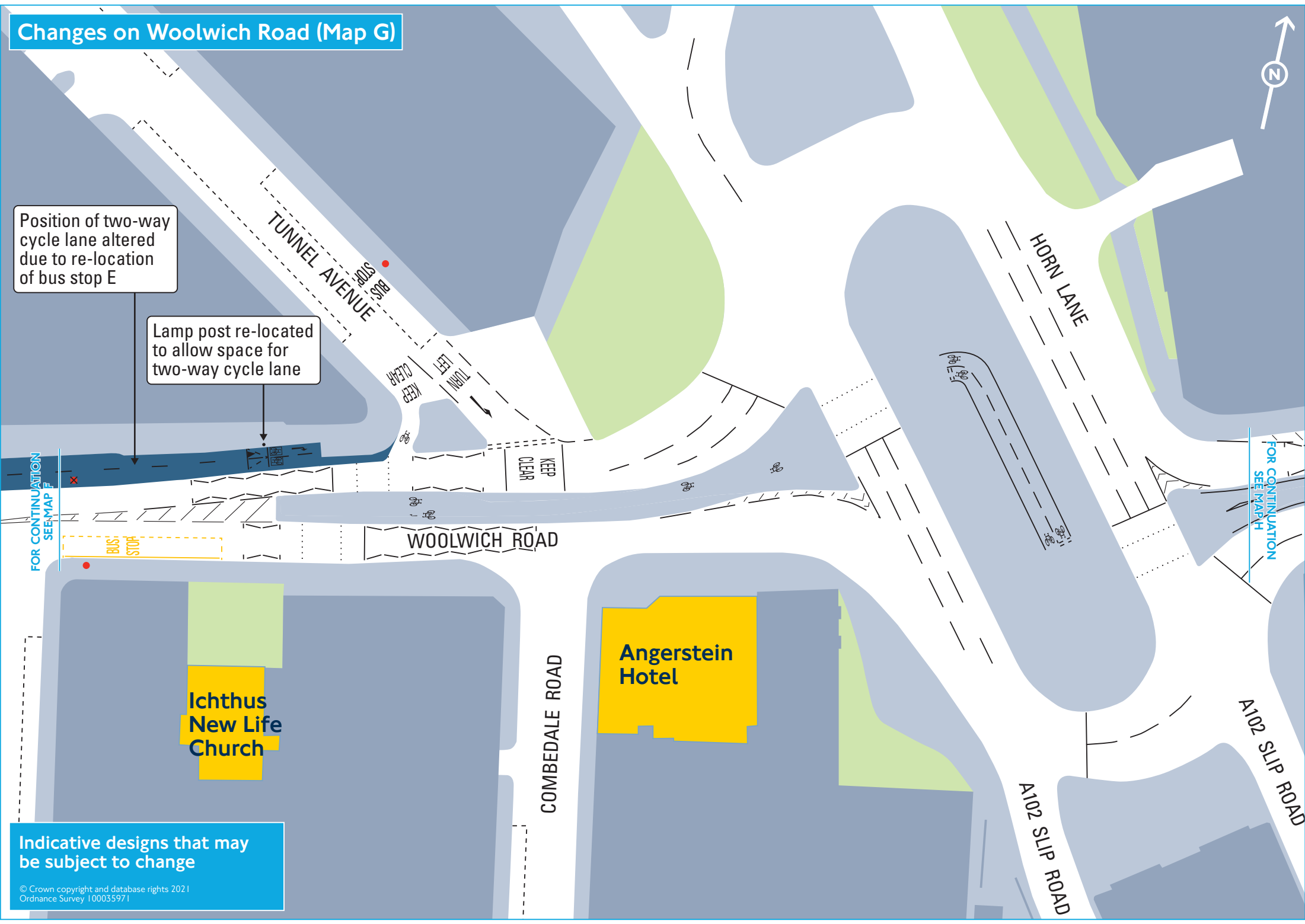
FOR CONTINUATION
SEE MAP H

**Ichthus
New Life
Church**

**Angerstein
Hotel**

Indicative designs that may be subject to change

© Crown copyright and database rights 2021
Ordnance Survey 100035971



Changes on Woolwich Road (Map H)



ALDEBURGH STREET

Two-way cycle lane with wands and line markings

FELLTRAM WAY

FOR CONTINUATION
SEE MAP G

WOOLWICH ROAD

FOR CONTINUATION
SEE MAP I

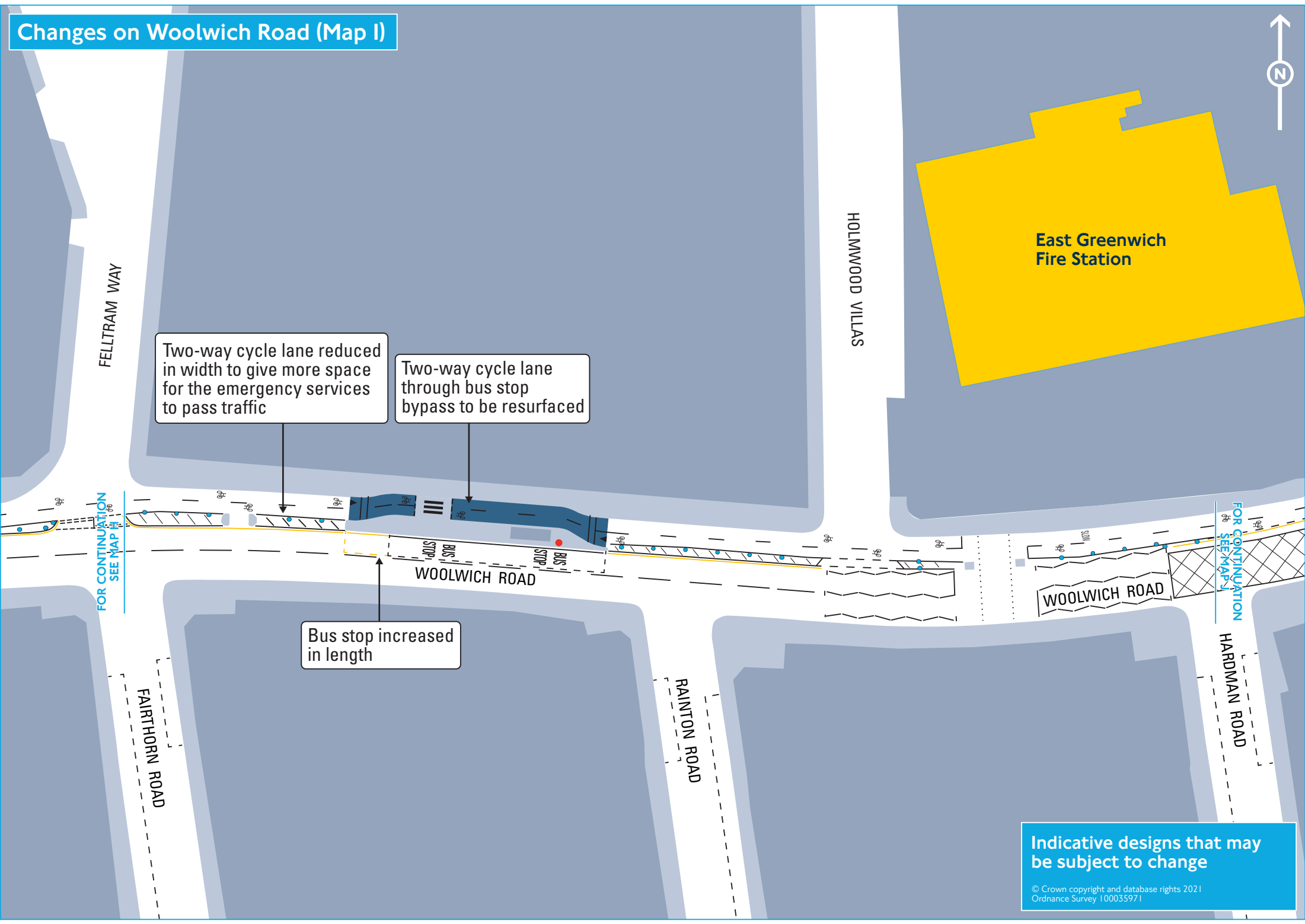
FARMDALE ROAD

FAIRTHORN ROAD

A102 SLIP ROAD

Indicative designs that may be subject to change
© Crown copyright and database rights 2021
Ordnance Survey 100035971

Changes on Woolwich Road (Map I)



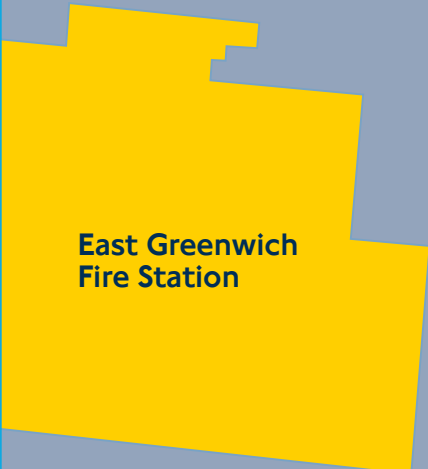
Two-way cycle lane reduced in width to give more space for the emergency services to pass traffic

Two-way cycle lane through bus stop bypass to be resurfaced

Bus stop increased in length

Indicative designs that may be subject to change
© Crown copyright and database rights 2021
Ordnance Survey 100035971

Changes on Woolwich Road (Map J)



**East Greenwich
Fire Station**

Two-way cycle lane reduced in width to allow vehicles exiting the Fire Station to pass traffic

Two-way cycle lane reduced in width to give more space for the emergency services to pass traffic

FOR CONTINUATION
SEE MAP I

FOR CONTINUATION
SEE MAP K

BUS STOP

Indicative designs that may be subject to change
© Crown copyright and database rights 2021
Ordnance Survey 100035971

Changes on Woolwich Road (Map K)



Greenwich Shopping Park

Marks & Spencer

Two-way cycle lane reduced in width to allow more space for emergency vehicles to pass traffic

Island reduced in size

Two-way cycle lane reduced in width to allow more space for emergency vehicles to pass traffic

Two-way cycle lane through bus stop bypass to be resurfaced

FOR CONTINUATION SEE MAP J

WOOLWICH ROAD

BUS STOP

BUS STOP

FOR CONTINUATION SEE MAP L

Indicative designs that may be subject to change

© Crown copyright and database rights 2021
Ordnance Survey 100035971

Changes on Woolwich Road (Map L)



Marks & Spencer

Car Park

Two-way cycle lane through bus stop bypass to be resurfaced

Two-way cycle lane reduced in width to give more space for the emergency services to pass traffic

Two-way cycle lane reduced in width to provide more space for traffic to pass stationary buses

FOR CONTINUATION SEE MAP K

FOR CONTINUATION SEE MAP M

WOOLWICH ROAD

WOOLWICH ROAD

RATHMORE ROAD

Indicative designs that may be subject to change
© Crown copyright and database rights 2021
Ordnance Survey 100035971

Changes on Woolwich Road (Map M)

Car Park

GALLIONS ROAD

Makro



Eastbound cycle lane with wands

Westbound cycle lane with wands

WOOLWICH ROAD

WOOLWICH ROAD

BUS STOP

SCHEME EXTENTS

FOR CONTINUATION SEE MAP L

Indicative designs that may be subject to change
© Crown copyright and database rights 2021
Ordnance Survey 100035971

